

How to update the firmware of a Capture Advance IP Camera using the Capture ADV Tool

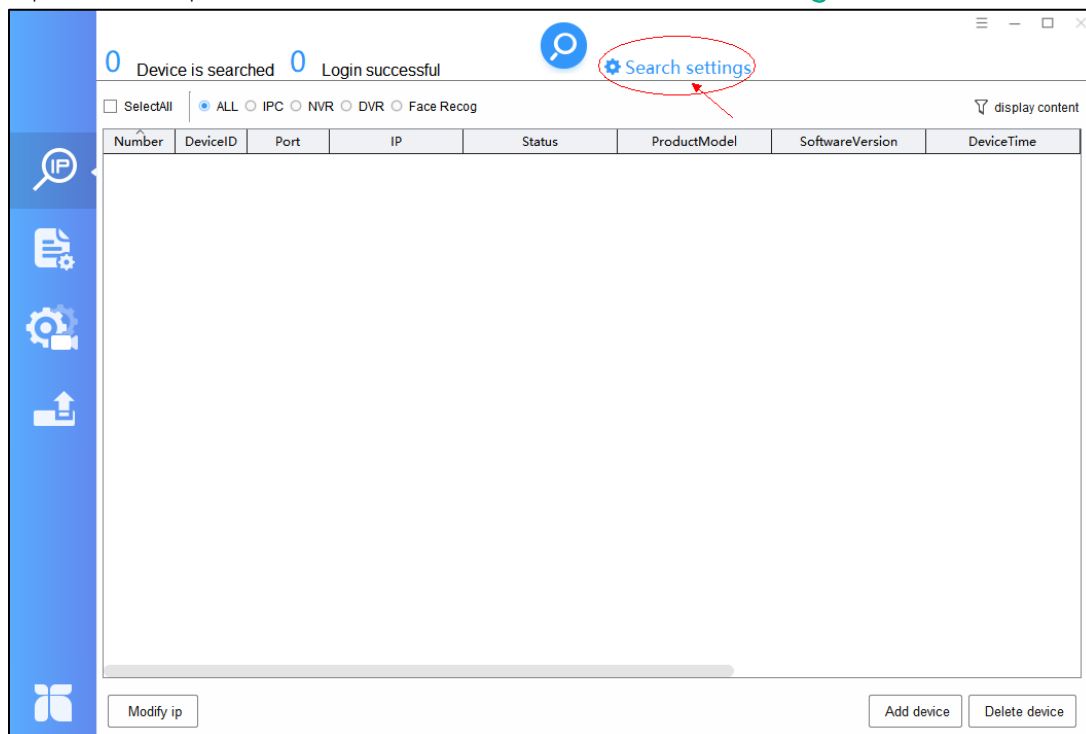
Follow the steps below outlining how to update a Capture Advance IP Camera using the Capture ADV Tool.

Preparation:

1. Download the correct firmware for your camera at www.capture-adv.com and then select **Software & Firmware**.
2. Download the Capture Advance Tool from this link:
https://dy47zo3o04pkc.cloudfront.net/CaptureADV_Tool_1.9.9.exe
3. Ensure that the PC and the camera are on the same network segment.

Procedures:

1. Open the Capture Advance Tool and click **Search settings**.



- Input the camera password in the **Password** field. Then, click **OK**.

Search settings

☐ Active Setting

Start IP

.

.

.

End IP

.

.

.

Network

all network

Control Port

30001

User name

admin

Password

•

•

•

•

•

•

The settings will take effect after re searching

OK

- Click the **Search** (magnifying glass icon) button. If the entered password is correct, the camera status will be **Online**. If it says **Login failed**, it cannot be updated using the tool.

Capture

advance

1 Device is searched

1 Login successful

Search settings

☐ SelectAll
 ☒ ALL
 ☐ IPC
 ☐ NVR
 ☐ DVR
 ☐ Face Recog

display content

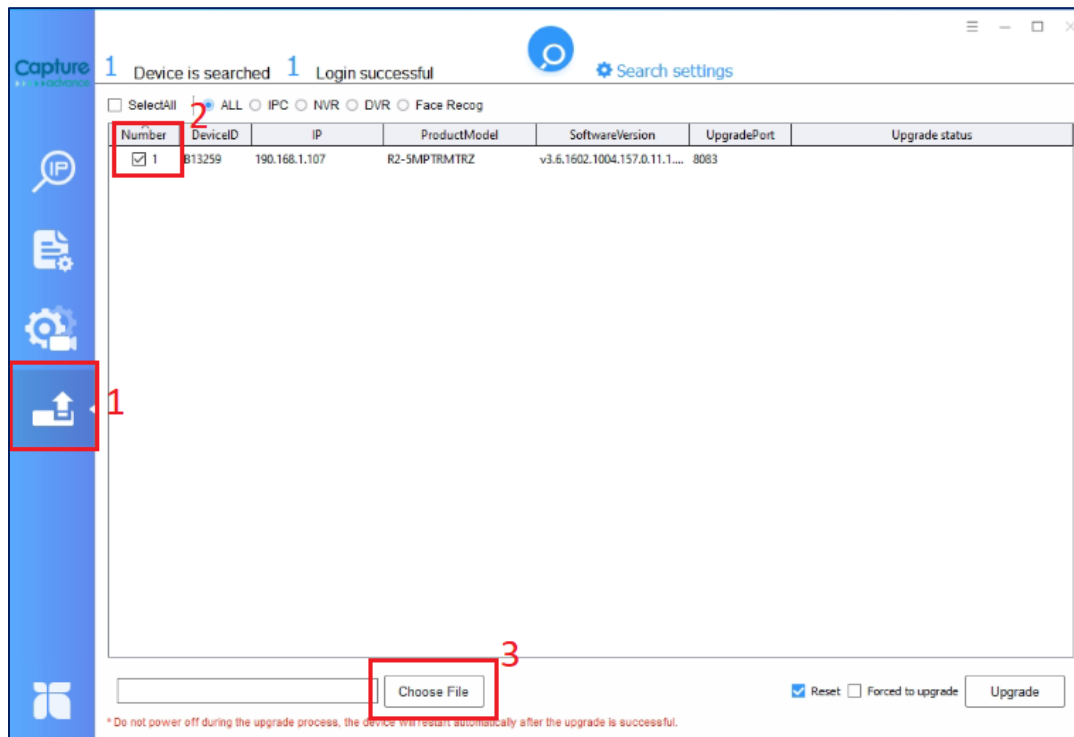
| Number | DeviceID | Port | IP | Status | ProductModel | SoftwareVersion | Dev |
|----------------------------|----------|-------|---------------|--------|--------------|----------------------------------|------------|
| <input type="checkbox"/> 1 | B13259 | 30001 | 190.168.1.107 | Online | R2-5MPTRMTRZ | v3.6.1602.1004.157.0.11.1.11.D01 | 2022-09-27 |

Modify ip

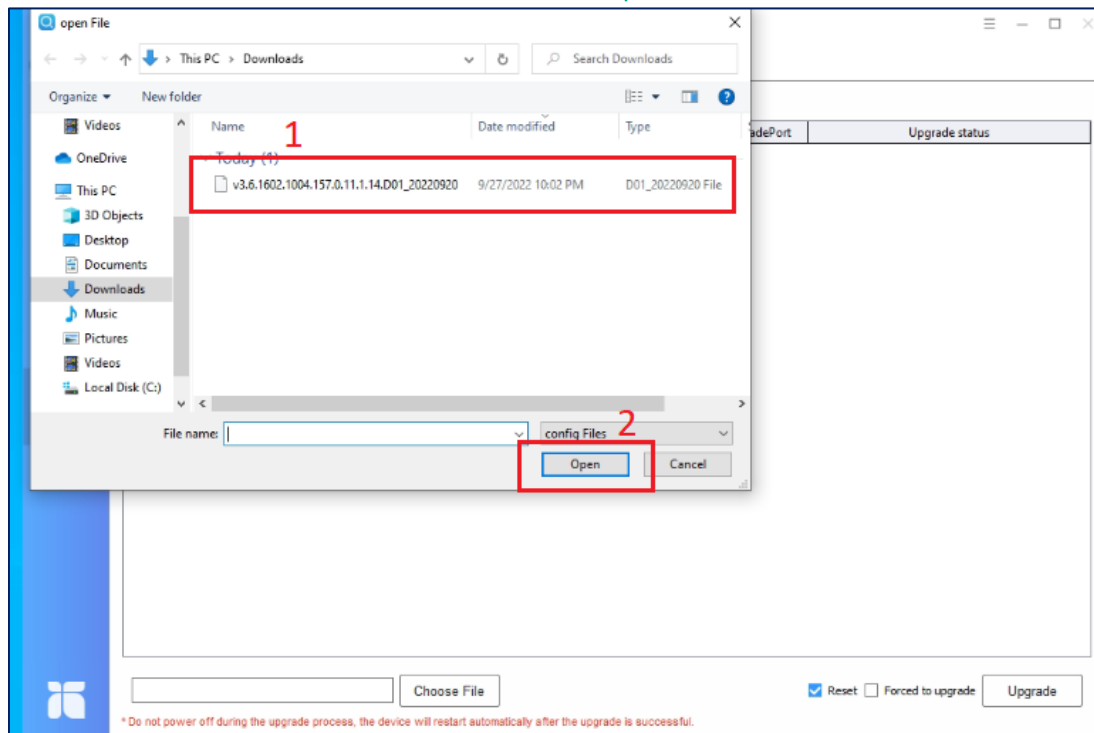
Add device

Delete device

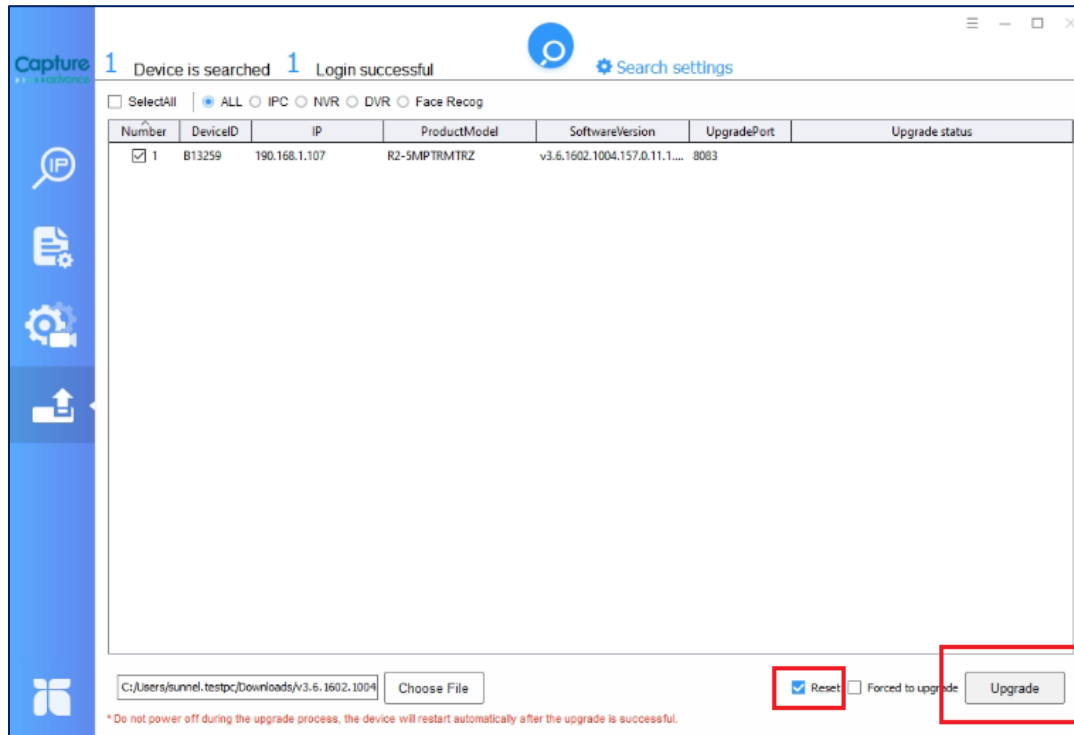
- Click the **Firmware update** icon, and tick the box of the camera that will be upgraded. Click **Choose File**.



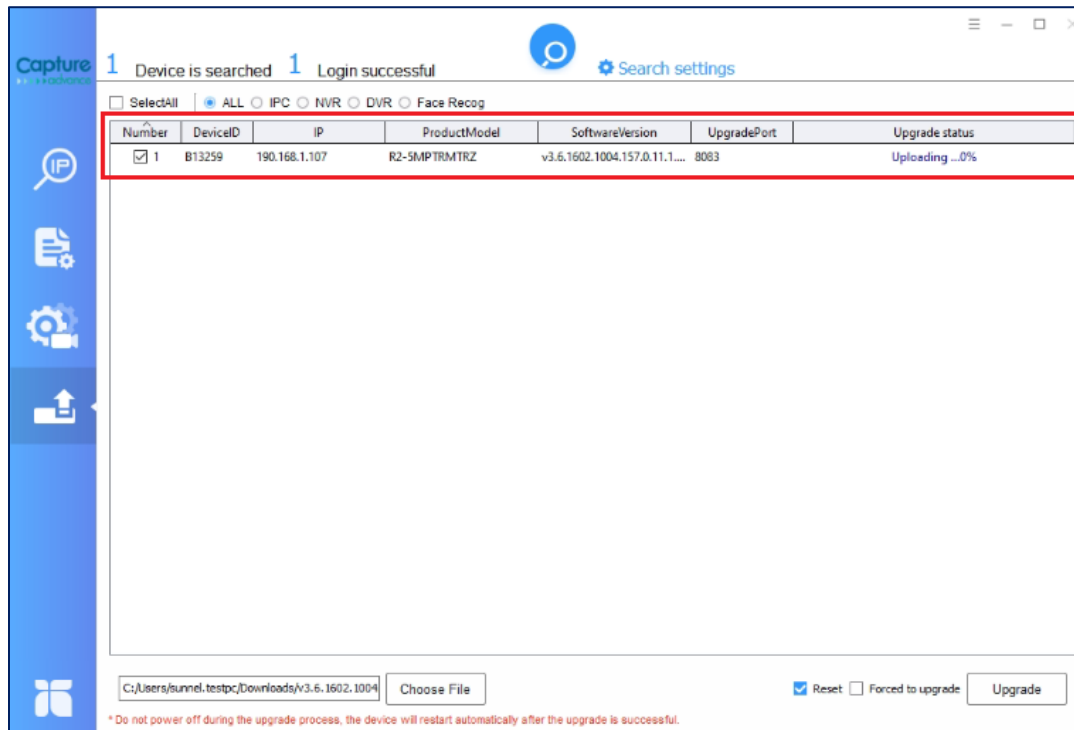
- Select the correct firmware file and click **Open**.



6. You may also tick the box beside **Reset** to reset the camera to the default settings after the upgrade. Click **Upgrade** to proceed with upgrading the camera.



7. After the firmware has been uploaded to the camera, the upgrade will proceed. Do not close the tool until the update is completed.



1 Device is searched 1 Login successful

SelectAll ☐ ALL ☐ IPC ☐ NVR ☐ DVR ☐ Face Recog

| Number | DeviceID | IP | ProductModel | SoftwareVersion | UpgradePort | Upgrade status |
|--------|----------|---------------|--------------|------------------------------|-------------|------------------|
| 1 | B13259 | 190.168.1.107 | R2-SMPTRMTRZ | v3.6.1602.1004.157.0.11.1... | 8083 | Uploading ...72% |

C:\Users\sundel.testpc\Downloads\v3.6.1602.1004 Choose File

☒ Reset ☐ Forced to upgrade Upgrade

* Do not power off during the upgrade process, the device will restart automatically after the upgrade is successful.

1 Device is searched 1 Login successful

SelectAll ☐ ALL ☐ IPC ☐ NVR ☐ DVR ☐ Face Recog

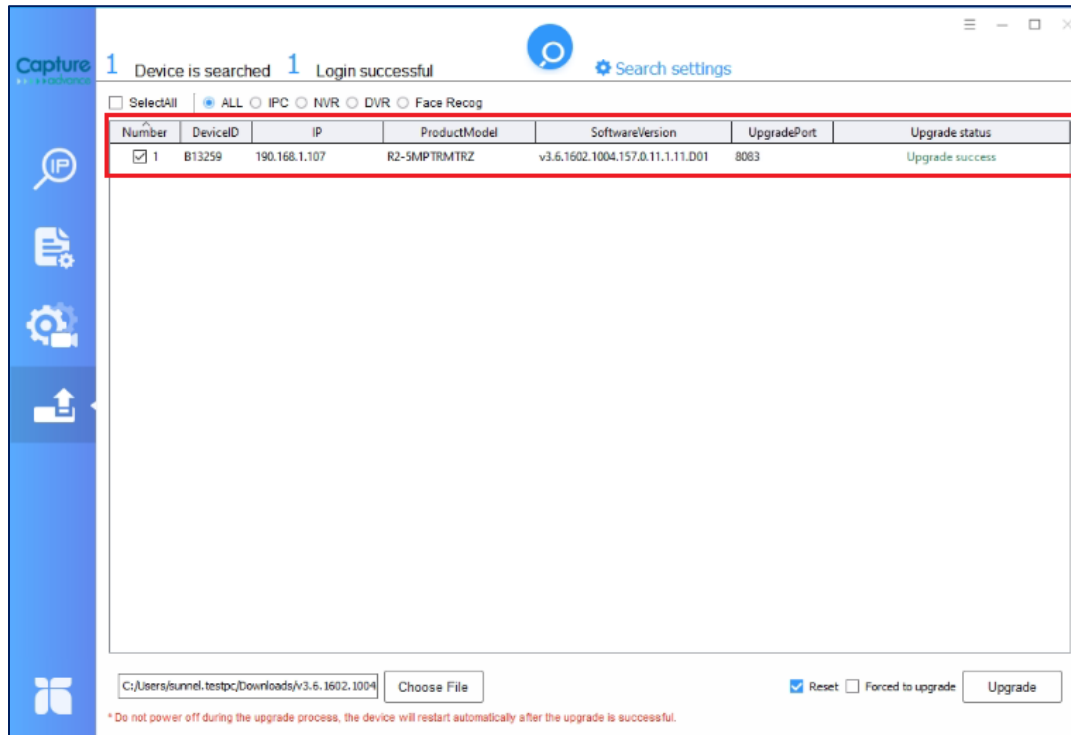
| Number | DeviceID | IP | ProductModel | SoftwareVersion | UpgradePort | Upgrade status |
|--------|----------|---------------|--------------|------------------------------|-------------|---------------------------------|
| 1 | B13259 | 190.168.1.107 | R2-SMPTRMTRZ | v3.6.1602.1004.157.0.11.1... | 8083 | Upload succeeded, upgrading ... |

C:\Users\sundel.testpc\Downloads\v3.6.1602.1004 Choose File

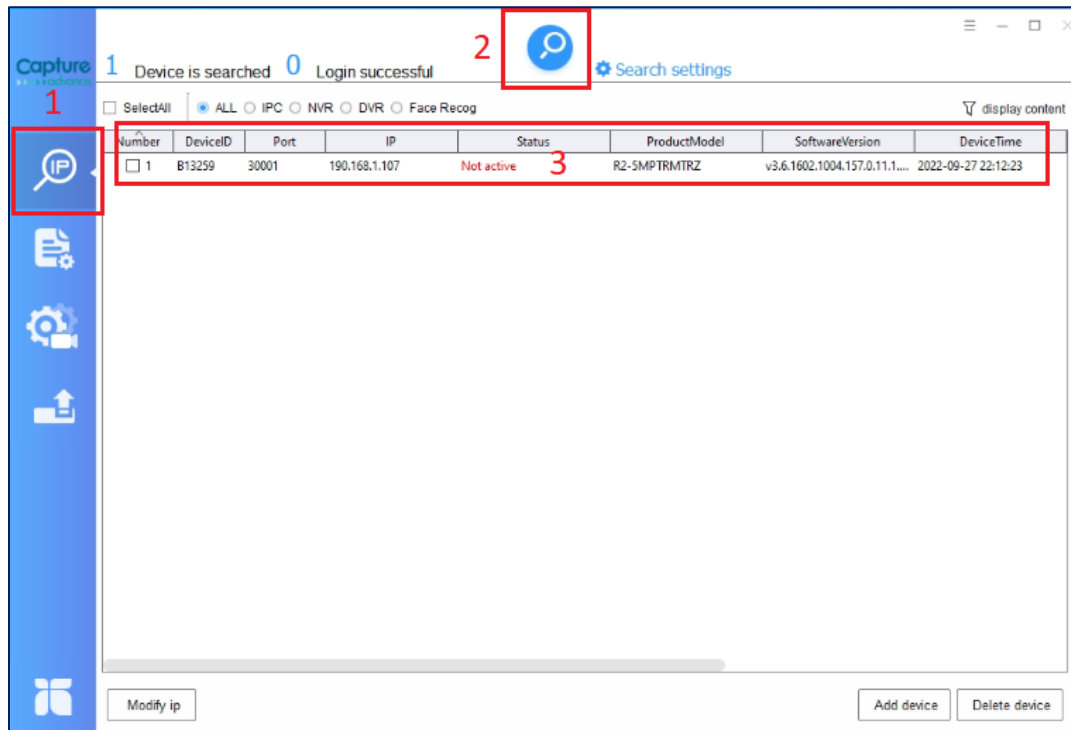
☒ Reset ☐ Forced to upgrade Upgrade

* Do not power off during the upgrade process, the device will restart automatically after the upgrade is successful.

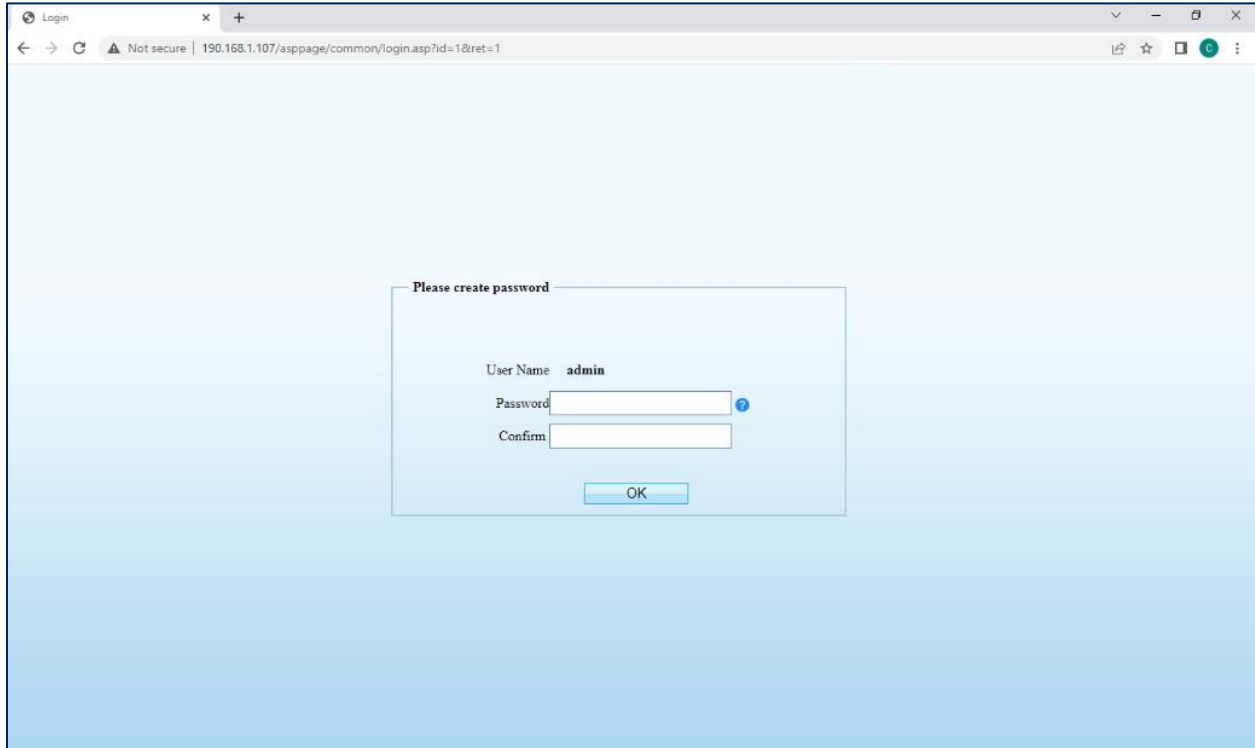
8. Once the upgrade is successful, you will see 'Upgrade success' under Upgrade status on the tool.



9. Go back to the IP Search icon and click Search. The status of the camera will be 'Not Active' if you opted to reset the camera during the upgrade.



10. You may reactivate the camera by creating a new password.



The screenshot shows a web browser window with the address bar displaying "190.168.1.107/asppage/common/login.asp?id=1&ret=1". The page has a light blue background. In the center, there is a white dialog box titled "Please create password". Inside the dialog box, the "User Name" field is pre-filled with "admin". Below it are two empty text input fields labeled "Password" and "Confirm". A blue "OK" button is located at the bottom of the dialog box.

You may also use the Capture ADV Tool to reactivate the camera. You can watch the video guide here: <https://youtu.be/O0s3uJzOPQg>